

Rental code

ESP330

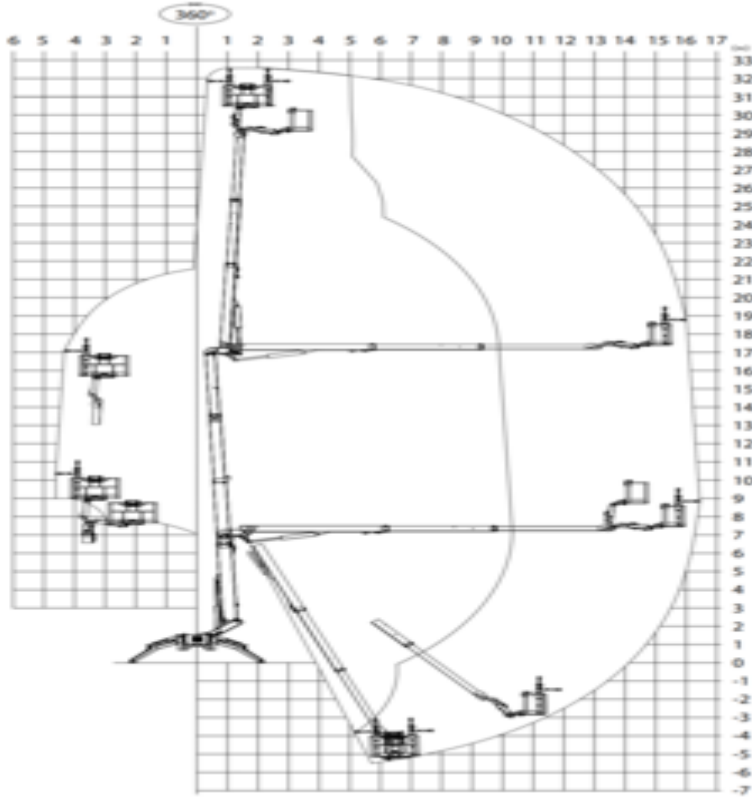
Machine rental classification

33

16.5

230

Safety requirements



Machine specifications

Lifting propulsion	Electric
Driving propulsion	Electric
Max. platform height (m)	30.48
Max. working height (m)	32.48
Max. working outreach (m)	16.65
Up and over height (m)	16.5
Machine weight (Kg)	7616
Transport dimensions (LxWxH)	6.5 x 1.6 x 1.99
Platform dimensions (LxW)	1.6 x 0.7

Rec. number of people	2
Swing radius (°)	360
Elevated manouvering	No
Charging (V)	220-240 V
Terrain & tires	Indoor Outdoor, Crawler